



Donovan Saunders

Candidate Property Practitioner
Registered with PPRA
(FFC 121 151 8)

0743713355

donovan@newpointproperty.co.za

Contact Head Office

010 0354431

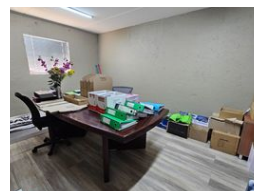
Office 40A
Eden Meadows Complex
1 Van Riebeeck Avenue
Greenstone
1609

813m² Warehouse For Sale in Jet Park

NEW



Web Ref CL13962



R7,300,000

Monthly Rates R11,283.3 Excl. VAT

2 3

813m² Freestanding Industrial Warehouse in Jet Park – Prime Location with Excellent Access

Position your business in the heart of Jet Park with this well-maintained 813m² freestanding warehouse, offering a balanced mix of functionality and accessibility. The property includes a professional office component with reception, single and open-plan offices, and dedicated ablutions for warehouse staff—ideal for streamlined day-to-day operations.

The warehouse boasts good internal height and is well-suited for racking, storage, or light manufacturing. Two large on-grade roller shutter doors ensure smooth access for deliveries and dispatch. With excellent highway connectivity and operational independence, this facility is perfect for businesses needing a prime, high-performance industrial space. Contact us today to

Features

Zoning Industrial

Interior

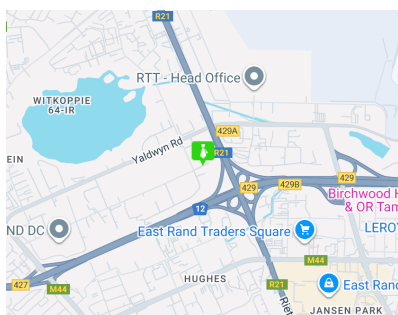
Power 3 Phase	Yes
Power Amps	100

Exterior

Covered Parking Bays	2
Open Parking Bays	3

Sizes

Floor Size	813m ²
Land Size	1,107m ²
Building Height	6m



<https://www.newpointproperty.co.za>