



Wayne Churchyard  
0817726802  
wayne@newpointproperty.co.za

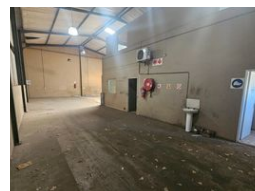
Contact Head Office

010 0354431

Office 40A  
Eden Meadows Complex  
1 Van Riebeeck Avenue  
Greenstone  
1609



Web Ref CL12434



## R2,100,000

0 0

### Prime 351m<sup>2</sup> Warehouse for Sale in Anderbolt's Industrial Hub

Unlock the potential of this 351m<sup>2</sup> warehouse, perfectly positioned in a secure industrial park in the sought-after Anderbolt area. Designed for efficiency, the warehouse offers excellent height to the eaves, abundant natural light, and seamless access through a large on-grade roller shutter door. With a robust three-phase power supply, this versatile space is ideal for a variety of industrial operations.

The property also features a spacious open-plan reception area, multiple offices, a boardroom, a kitchenette, storerooms, and dedicated ablution facilities for both office and warehouse staff. Located just off Main Reef Road, with easy access to the N12 and N17 highways, this warehouse offers excellent main-road exposure and is an exceptional investment for businesses seeking a

### Features

**Zoning** Industrial

#### Interior

Power 3 Phase Yes

#### Exterior

Security Yes

#### Sizes

Floor Size 351m<sup>2</sup>

