



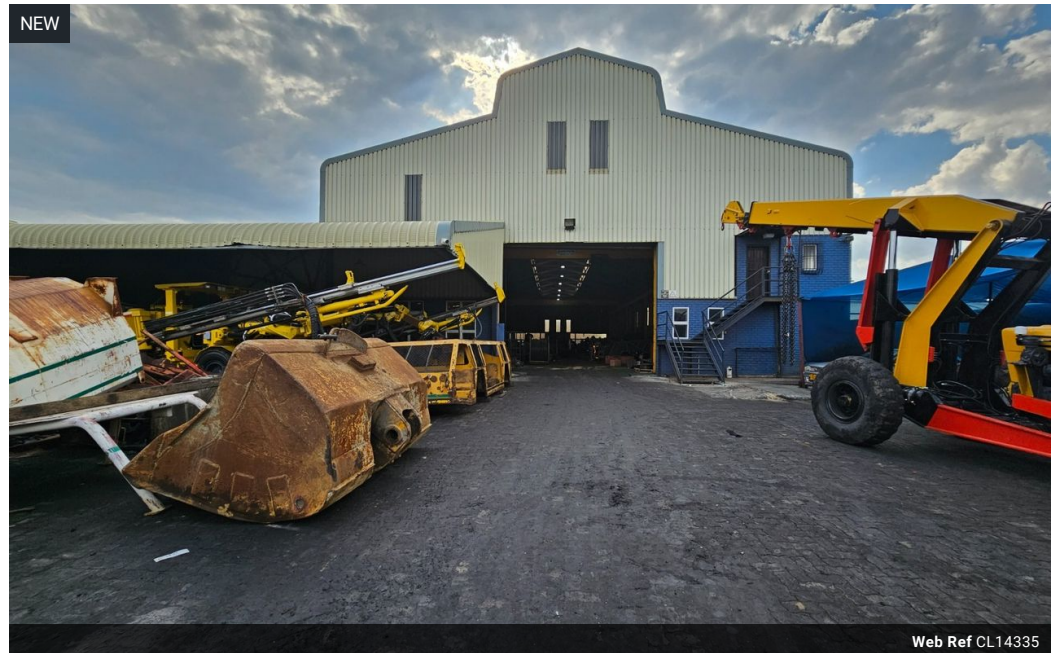
Wayne Churchyard
0817726802
wayne@newpointproperty.co.za

Contact Head Office

010 0354431

Office 40A
Eden Meadows Complex
1 Van Riebeeck Avenue
Greenstone
1609

3,500m² Factory For Sale in Anderbolt



Web Ref CL14335



R28,000,000

 6  8

Heavy-Duty 3,500m² Facility with Cranes in Anderbolt

Set on a 7,441m² stand, this freestanding 3,500m² industrial facility is perfectly equipped for manufacturing, fabrication, or engineering. The warehouse features multiple on-grade roller shutter doors, exceptional eave height, and five heavy-duty cranes ranging from 5 to 10 tons. A strong three-phase power supply and excellent natural lighting ensure smooth and efficient operations.

The office component is neat and functional, offering a welcoming reception, three open-plan offices, a boardroom, a canteen, and ample ablutions. With super-link access and close proximity to the N12 and N17 highways, this facility combines heavy-duty

Features

Zoning Industrial

Interior

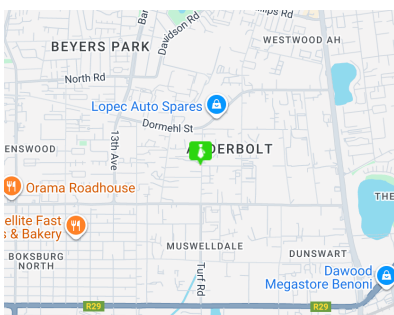
| | |
|---------------|-----|
| Power 3 Phase | Yes |
| Power Amps | 250 |

Exterior

| | |
|----------------------|---|
| Covered Parking Bays | 6 |
| Open Parking Bays | 8 |

Sizes

| | |
|------------|---------------------|
| Floor Size | 3,500m ² |
| Land Size | 7,441m ² |



<https://www.newpointproperty.co.za>