



Dane Davids
0844782022
dane@newpointproperty.co.za

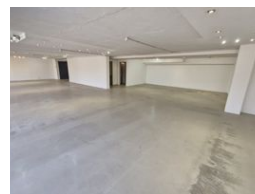
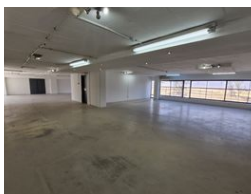
Contact Head Office

010 0354431

Office 40A
Eden Meadows Complex
1 Van Riebeeck Avenue
Greenstone
1609



Web Ref CL13292



R48,601 pm

Gross Monthly Rental R48,601 Excl. VAT
Monthly Rates R1 Excl. VAT

Monthly Levy R1 Excl. VAT



High-End Showroom in Kramerville's Design District

Position your brand at the center of style with this prestigious showroom space now available to lease in Kramerville, Sandton—one of Johannesburg's most coveted design destinations. With outstanding street visibility, floor-to-ceiling glass frontage, and high-end finishes throughout, this bright, contemporary space is tailor-made for showcasing premium décor, furniture, or lifestyle products. Generous customer parking and a sleek, professional setting make it the perfect stage to impress high-value clients.

Surrounded by leading names in interior design and luxury retail, the location places your business in prime company. Easy access to major highways ensures convenience for both suppliers and clients, while the area's steady foot traffic and creative energy offer

Features

Zoning Commercial

Interior

Floor Loading Cap. 10 Tn/m²
Air Conditioning Yes
Power Amps 100

Exterior

Security Yes

Sizes

Floor Size 371m²
Land Size 13,000m²

