



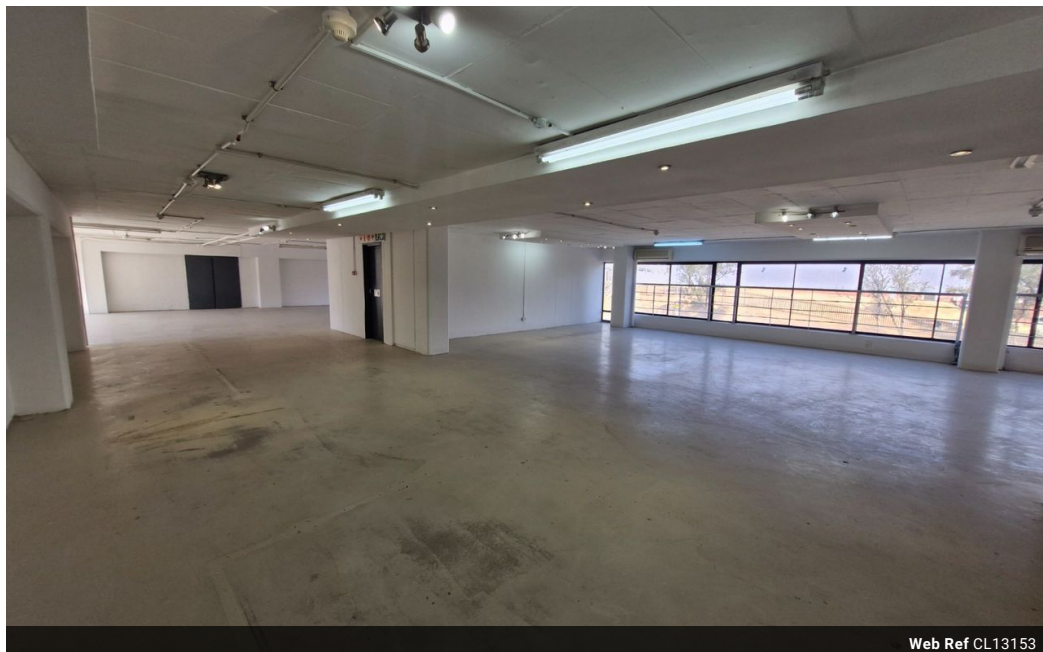
Dane Davids
0844782022
dane@newpointproperty.co.za

Contact Head Office

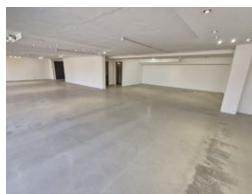
010 0354431

Office 40A
Eden Meadows Complex
1 Van Riebeeck Avenue
Greenstone
1609

371m² Showroom To Let in Kramerville



Web Ref CL13153



R42,665 pm

Gross Monthly Rental R42,665 Excl. VAT
Monthly Rates R1 Excl. VAT

Monthly Levy R1 Excl. VAT



0



0

Elevated Showroom Space in Kramerville's Design District

Position your brand in the heart of Sandton's trendiest design hub with this third-floor showroom now available to let in Kramerville Corner. Featuring sweeping panoramic views and generous natural light, this space creates the perfect canvas for décor, furniture, or creative concepts, offering both sophistication and visibility in one of Johannesburg's most sought-after locations.

The open-plan layout is ideal for dynamic displays or collaborative workspaces, while floor-to-ceiling windows flood the interior with light and style. Just minutes from major routes and surrounded by high-end showrooms and buzzing cafés, this location

Features

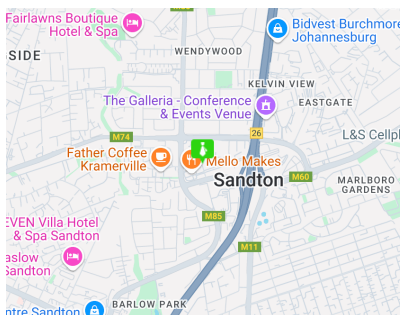
Zoning Commercial

Interior

Floor Loading Cap. 5 Tn/m²
Air Conditioning Yes
Power 3 Phase Yes
Power Amps 60

Sizes

Floor Size 371m²
Land Size 6,000m²



<https://www.newpointproperty.co.za>