



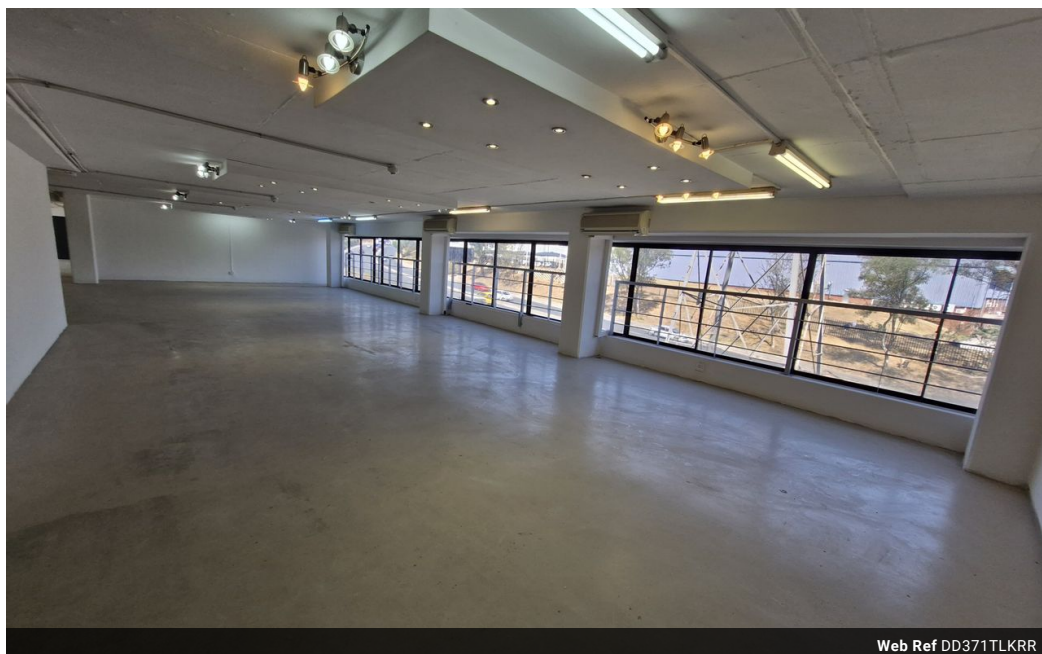
Dane Davids
0844782022
dane@newpointproperty.co.za

Contact Head Office

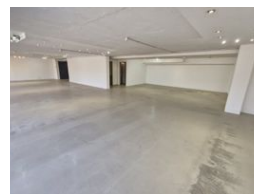
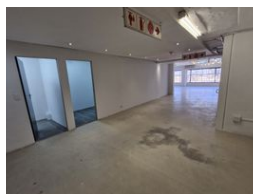
010 0354431

Office 40A
Eden Meadows Complex
1 Van Riebeeck Avenue
Greenstone
1609

371m² Showroom To Let in Kramerville



Web Ref DD371TLKRR



R42,665 pm

Gross Monthly Rental R42,665 Excl. VAT
Monthly Rates R1 Excl. VAT

Monthly Levy R1 Excl. VAT

0 0

sought after showroom and office space in the showroom hub of Kramerville

This third-floor showroom to let in Kramerville Corner, Sandton, offers a premium location for design, décor, or creative businesses. Positioned in the heart of Kramerville's vibrant design district, the space boasts panoramic views and abundant natural light, creating an inspiring and welcoming environment for clients and staff alike.

The open-plan layout allows for flexible use and stylish presentation of products or services. Large windows frame the surrounding cityscape, enhancing the upscale feel of the space. With easy access from main roads and close proximity to popular showrooms and cafés, this is an ideal opportunity for brands looking to position themselves in one of Sandton's most sought-after creative

Features

Zoning Commercial

Interior

Floor Loading Cap. 5 Tn/m²
Air Conditioning Yes
Power Amps 60

Sizes

Floor Size 371m²
Land Size 6,000m²

