



Dane Davids
0844782022
dane@newpointproperty.co.za

Contact Head Office

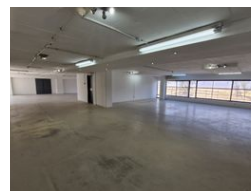
010 0354431

Office 40A
Eden Meadows Complex
1 Van Riebeeck Avenue
Greenstone
1609

371m² Showroom To Let in Kramerville



Web Ref DD371KRSH



R48,601 pm

Gross Monthly Rental R48,601 Excl. VAT
Monthly Rates R1 Excl. VAT

Monthly Levy R1 Excl. VAT



Sought after upmarket showroom to let Kramerville Sandton

A prime leasing opportunity is now available in Kramerville, Sandton, offering a prestigious showroom space in one of the area's most sought-after design hubs. This upmarket showroom boasts excellent visibility and a high-profile location, making it ideal for showcasing premium products or services. Expansive glass windows allow for abundant natural light, creating a bright and welcoming ambiance that enhances the customer experience. Featuring high-end finishes and ample parking, this space is perfect for businesses aiming to establish a strong presence in a dynamic commercial environment.

Positioned in Sandton's renowned creative district, the showroom is surrounded by top interior design, décor, and furniture stores,

Features

Zoning Commercial

Interior

Floor Loading Cap. 10 Tn/m²
Air Conditioning Yes
Power Amps 100

Exterior

Security Yes

Sizes

Floor Size 371m²
Land Size 13,000m²

