



**Jarred Purchase**  
Candidate Property Practitioner  
Registered with PPRA  
(FFC 118 480 9)  
0763465458  
[jarred@newpointproperty.co.za](mailto:jarred@newpointproperty.co.za)



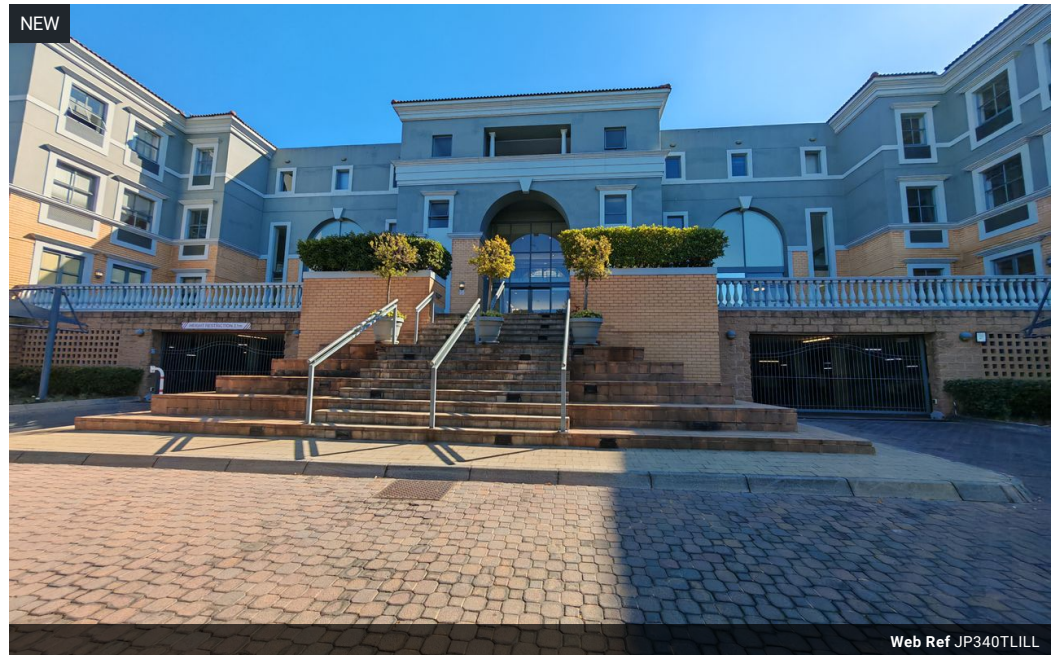
**Brandon Whitehead**  
Candidate Property Practitioner  
Registered with PPRA  
(FFC 121 151 9)  
0817743977  
[brandon@newpointproperty.co.za](mailto:brandon@newpointproperty.co.za)

Contact Head Office

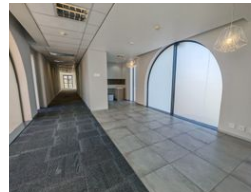
010 0354431

Office 40A  
Eden Meadows Complex  
1 Van Riebeeck Avenue  
Greenstone  
1609

340m<sup>2</sup> Office To Let in Illovo



Web Ref JP340TLILL



R44,170 pm

**Gross Monthly Rental** R44,170 Excl. VAT  
**Monthly Rates** R1 Excl. VAT  
**Monthly Levy** R1 Excl. VAT

10 5

Immaculate 340m<sup>2</sup> office space To Let in a sought after business park in Illovo

Positioned in the heart of Illovo Boulevard, this 339m<sup>2</sup> office space offers a modern, open-plan layout designed to suit a range of business needs. The offices consist of a reception area a large open plan office area, as well as several well sized air-conditioned private offices and a boardroom. Large windows fill the space with natural light and offer scenic views, creating an inspiring and professional work environment. The office space has a neat and modern kitchen and Male and Female toilets.

Located in a secure, and sought after office park with 24-hour security, and access control, the business park has back up power to ensure uninterrupted operations. Excellent transport links via the Gautrain bus route and easy access to the M1 highway ensure

## Features

**Zoning** Commercial

### Interior

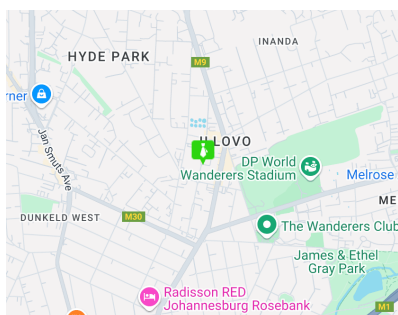
Air Conditioning Yes

### Exterior

Security Yes  
Covered Parking Bays 5  
Basement Parkings 5  
Open Parking Bays 5

### Sizes

Floor Size 340m<sup>2</sup>  
Land Size 10,000m<sup>2</sup>  
Building Height 8m



<https://www.newpointproperty.co.za>