



Alex Miliakidis
0842622452
alex@newpointproperty.co.za

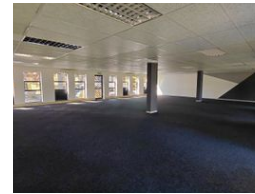
Contact Commercial Division

010 0354431

Office 40A
Eden Meadows Complex
1 Van Riebeeck Avenue
Greenstone
1609



Web Ref AM229TLH



R24,961 pm

Gross Monthly Rental R24,961 Excl. VAT
Monthly Rates R1 Excl. VAT

Monthly Levy R1 Excl. VAT

 6  3

Prime 229sqm Office Suite in Secure, Well-Equipped Office Park

Situated within a beautifully maintained and secure 24-hour access office park, this 229sqm office suite offers a modern and efficient workspace ideal for a dynamic business. The office boasts a spacious open-plan layout, allowing for flexible configurations to suit your operational needs. Designed with sustainability and functionality in mind, the park features a backup generator, a dedicated water tank, high-speed fibre connectivity, and energy-efficient LED lighting—ensuring uninterrupted productivity and long-term cost savings.

Positioned with excellent exposure onto Winnie Mandela Drive, the property enjoys high visibility and convenient access. It's located in close proximity to both Bryanston and the Sandton CBD, offering unparalleled connectivity to key business hubs, transport routes, and amenities.

Features

Building Name		Tamboti			
Zoning		Commercial			
Interior		Exterior		Sizes	
Air Conditioning	Yes	Security	Yes	Floor Size	229m²
		Covered Parking Bays	3	Land Size	20,000m²
		Basement Parkings	3	Building Height	6m
		Open Parking Bays	3		
Extras					
24 Hour Response Generator Backup Water Fibre Air Conditioner					

