



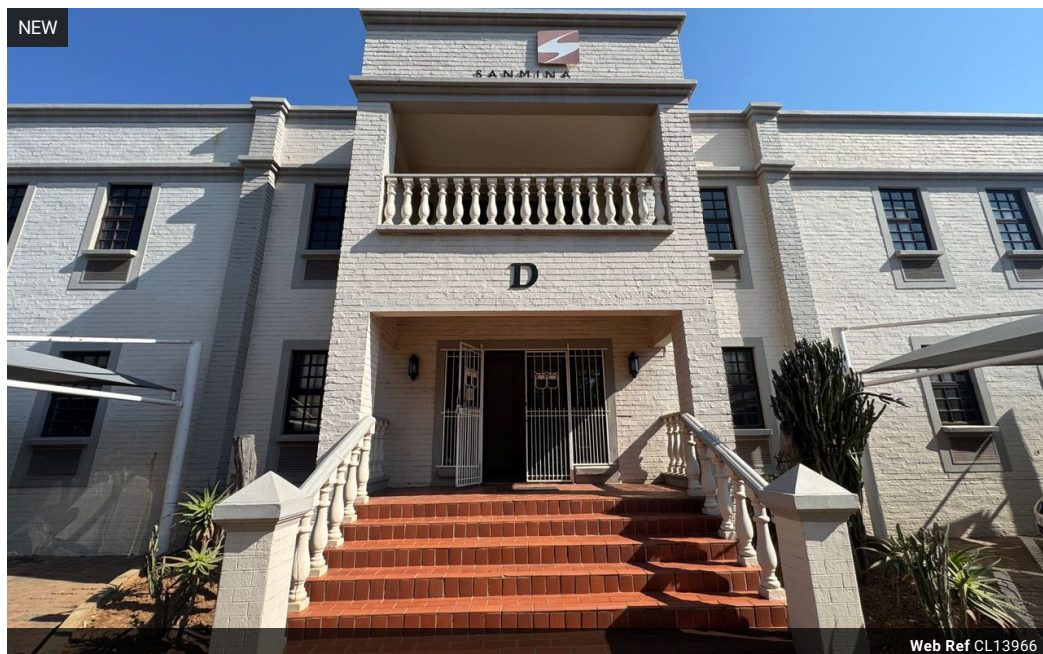
Miguel Naidoo
0745822026
miguel@newpointproperty.co.za

Contact Head Office

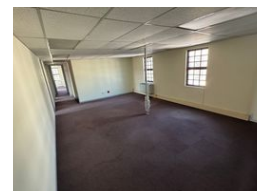
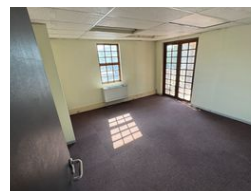
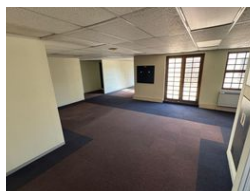
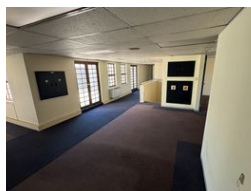
010 0354431

Office 40A
Eden Meadows Complex
1 Van Riebeeck Avenue
Greenstone
1609

673m² Office To Let in Eastgate



Web Ref CL13966



R40,380 pm

Gross Monthly Rental R40,380 Excl. VAT
Monthly Rates R1 Excl. VAT
Monthly Levy R1 Excl. VAT

2 4

Professionally Managed Office Space To Let in Eastgate Ext. 6 – 673m² of Practical Comfort

Nestled in the peaceful and well-kept Eastgate Extension 6, this 673m² freestanding office block is ideal for businesses seeking a balance of functionality and comfort. The space features a combination of open-plan areas and private offices, perfect for collaboration and focused work. Large windows allow for generous natural light throughout the day, while a well-sized kitchenette and clean bathrooms offer day-to-day convenience. Located within a secure, access-controlled office park with 24-hour security, the building ensures peace of mind for your team.

The location offers excellent accessibility, with quick access to Marlboro Drive, the M1 highway, and nearby commercial hubs like Sandton and Woodmead. Nearby retail amenities and a strong sense of community within the park create a supportive,

Features

Zoning Commercial

Interior

Floor Loading Cap. 1 Tn/m²
Air Conditioning Yes
Power Amps 63

Exterior

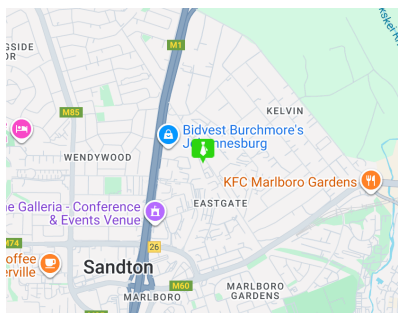
Security Yes
Covered Parking Bays 2
Open Parking Bays 4

Sizes

Floor Size 673m²
Land Size 10,000m²
Building Height 10m

Extras

24 Hour Access Air Conditioner



<https://www.newpointproperty.co.za>