



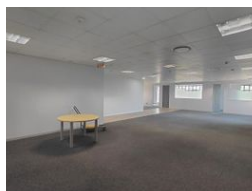
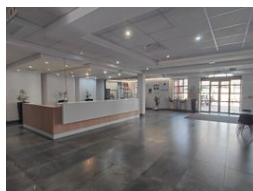
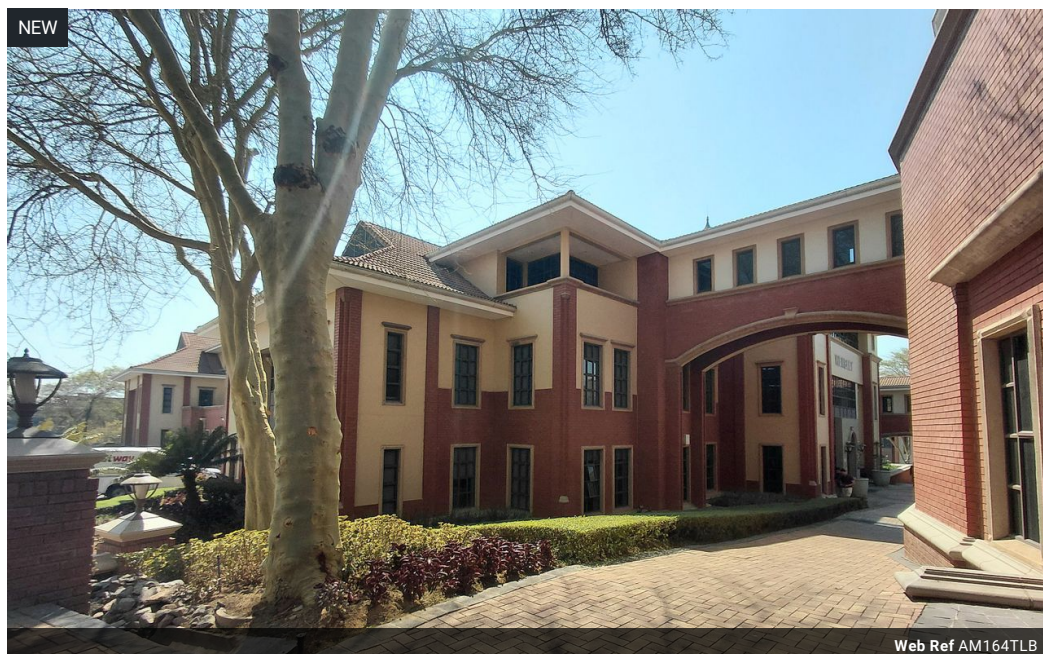
Alex Miliakidis
0842622452
alex@newpointproperty.co.za

Contact Commercial Division

010 0354431

Office 40A
Eden Meadows Complex
1 Van Riebeeck Avenue
Greenstone
1609

164m² Office To Let in Bryanston



R33,620 pm

Gross Monthly Rental R33,620 Excl. VAT
Monthly Rates R1 Excl. VAT

Monthly Levy R1 Excl. VAT

5 5

Elegant 164sqm Office Suite in Bryanston

This 164sqm office suite offers a spacious and versatile layout, featuring a generous open-plan area complemented by private office cubicles. The floor is equipped with a beautifully designed communal kitchen, available to all businesses on that level, along with a comfortable seating area where staff can enjoy coffee breaks or simply unwind during the day.

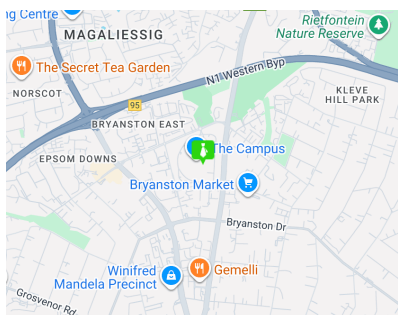
Situated in one of Bryanston's most prestigious office parks, tenants benefit from an exceptional range of on-site amenities. These include a private golf course, soccer field, cricket pitch, padel court, fully equipped gym, cycle studio, four cafés, and fine dining restaurants — all set within beautifully landscaped gardens and tranquil surroundings. With easy access to the N1 highway and

Features

Building Name	Wembley				
Zoning	Commercial				
Interior		Exterior		Sizes	
Air Conditioning	Yes	Security	Yes	Floor Size	164m ²
		Basement Parkings	5	Land Size	250,000m ²
		Open Parking Bays	5	Building Height	10m
		Parking Ratio	5 bays / 100 m ²		

Extras

24 Hour Response Generator Backup Water Fibre



<https://www.newpointproperty.co.za>