

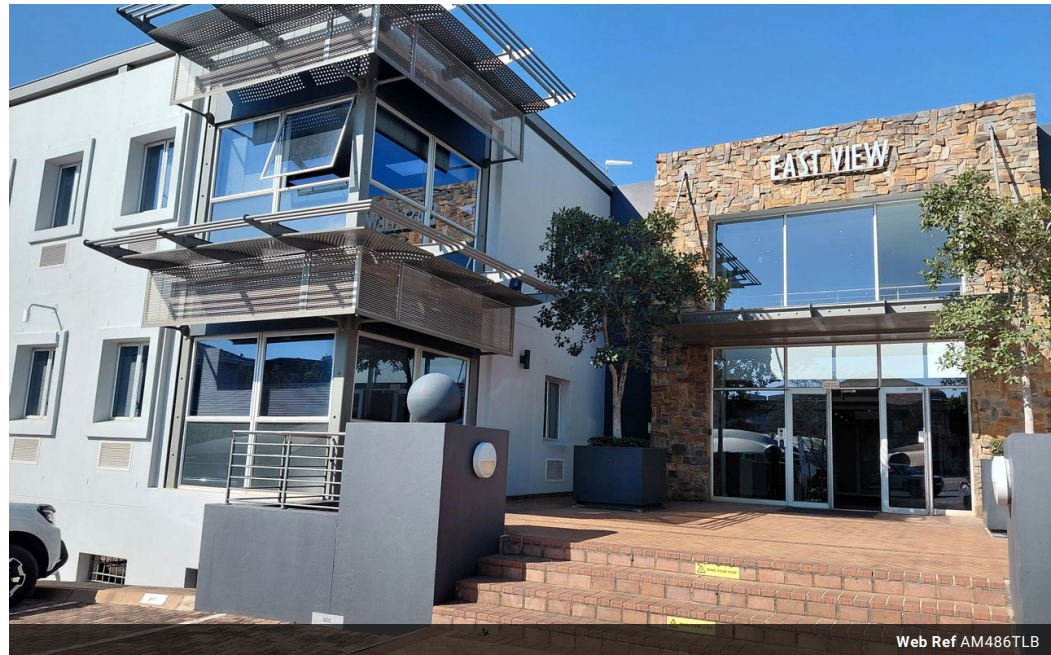


Alex Miliakidis
0842622452
alex@newpointproperty.co.za

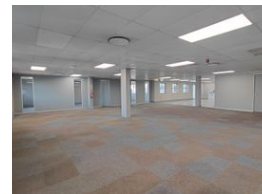
Contact Commercial Division

010 0354431

Office 40A
Eden Meadows Complex
1 Van Riebeeck Avenue
Greenstone
1609



Web Ref AM486TLB



R60,750 pm

Gross Monthly Rental R60,750 Excl. VAT
Monthly Rates R1 Excl. VAT

Monthly Levy R1 Excl. VAT

 12  6

486sqm Office Suite in Prime Bryanston Location

Located in the heart of Bryanston, this spacious 486sqm office suite offers a modern and functional workspace ideal for businesses seeking convenience, connectivity, and comfort.

Situated within a well-maintained office park, the property boasts top-tier amenities including a backup generator, backup water supply, 24-hour security, and high-speed fibre connectivity, ensuring uninterrupted operations and peace of mind.

The office suite features a versatile open-plan layout, complemented by several private offices and a large, contemporary kitchen area — perfect for collaborative teams and dynamic business environments.

The park itself is known for its quality finishes and professional atmosphere. Conveniently located close to major transport routes

Features

Building Name	East View				
Zoning	Commercial				
Interior		Exterior		Sizes	
Air Conditioning	Yes	Security	Yes	Floor Size	486m²
		Covered Parking Bays	6	Land Size	15,000m²
		Basement Parkings	6		
		Open Parking Bays	6		
		Parking Ratio	4 bays / 100 m²		
Extras					
24 Hour Response Backup Water Generator					

