



Alex Miliakidis
0842622452
alex@newpointproperty.co.za

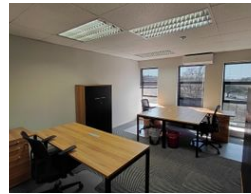
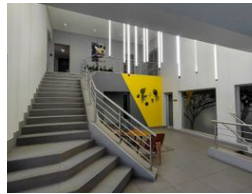
Contact Commercial Division

010 0354431

Office 40A
Eden Meadows Complex
1 Van Riebeeck Avenue
Greenstone
1609



Web Ref AM20TLB3



R11,499 pm

Gross Monthly Rental R11,499 Excl. VAT
Monthly Rates R1 Excl. VAT

Monthly Levy R1 Excl. VAT

2 1

Fully Serviced 3-Seater Office Suite in Prime Bryanston Location

Nestled in the heart of Bryanston, this modern 3-seater office suite offers a professional and secure working environment in a well-established office park. With 24-hour security, this space provides peace of mind while placing your business in one of Johannesburg's most sought-after commercial areas.

The office park is fully equipped with backup power, backup water, and high-speed fibre connectivity, ensuring uninterrupted operations and seamless digital performance—perfect for agile teams or growing businesses.

Tenants enjoy access to a variety of communal boardrooms located just below the suite, offering 8-seater, 10-seater, and 12-seater options—ideal for meetings, client presentations, or strategy sessions. Additionally, there is a communal kitchen available for use,

Features

Building Name		Fever Tree			
Zoning		Commercial			
Interior					
Air Conditioning	Yes	Exterior		Sizes	
		Security	Yes	Floor Size	20m²
		Covered Parking Bays	1	Land Size	20,000m²
		Basement Parkings	1	Building Height	6m
		Open Parking Bays	1		
Extras					
Generator Backup Water Fibre					

