

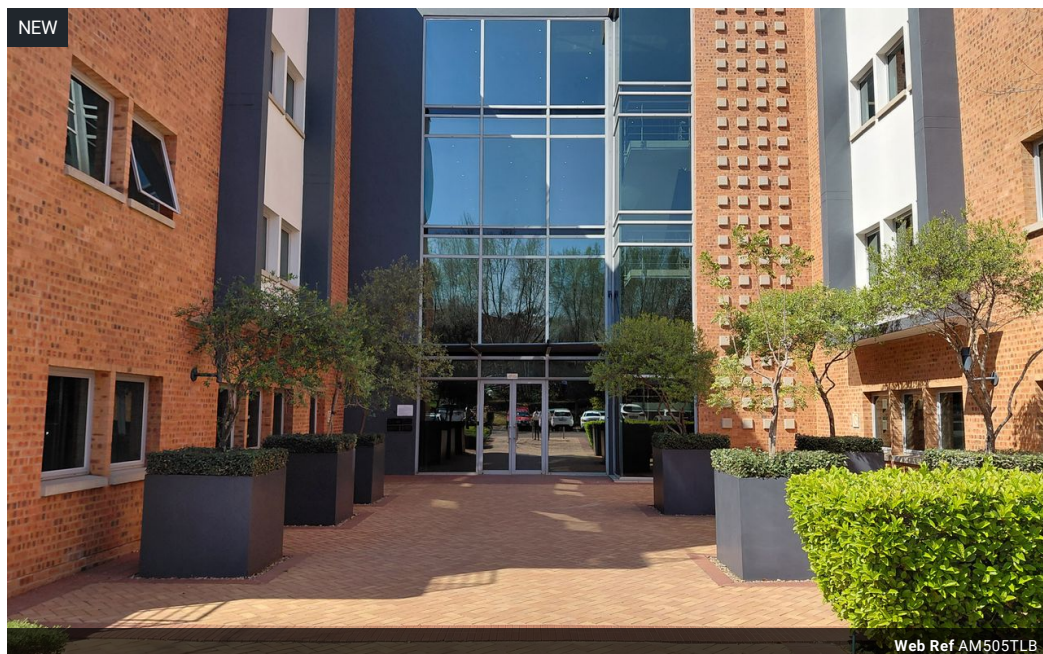


Alex Miliakidis
0842622452
alex@newpointproperty.co.za

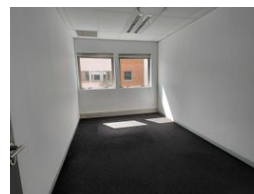
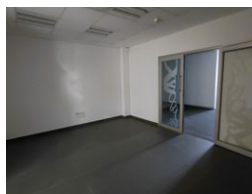
Contact Commercial Division

010 0354431

Office 40A
Eden Meadows Complex
1 Van Riebeeck Avenue
Greenstone
1609



Web Ref AM505TLB



R56,469 pm

Gross Monthly Rental R56,469 Excl. VAT
Monthly Rates R11,443.3 Excl. VAT

Monthly Levy R5,312.6 Excl. VAT

13 7

Versatile 505sqm Office Suite in Prime Bryanston Location with Backup Power & Water

Presenting a premium 505sqm open-plan office suite ideally located in the heart of Bryanston, offering a versatile and modern workspace tailored to accommodate a range of professional needs. This expansive suite features a dynamic open layout complemented by private offices, meeting rooms, and a fully equipped boardroom, providing the ideal balance between collaboration and privacy. A built-in kitchen adds everyday convenience, while elevators ensure easy access across all floors, supporting full wheelchair accessibility.

The office is situated within a secure and well-maintained office park, offering peace of mind for both staff and visitors. Fully equipped with backup power and water, the suite guarantees uninterrupted operations regardless of external disruptions. Its prime

Features

Building Name		Lacey Oak House			
Zoning		Commercial			
Interior		Exterior		Sizes	
Air Conditioning	Yes	Security	Yes	Floor Size	505m ²
		Covered Parking Bays	7	Land Size	20,000m ²
		Basement Parkings	6		
		Open Parking Bays	7		
		Parking Ratio	4 bays / 100 m ²		

Extras

24 Hour Response Generator Air Conditioner Wheelchair Accessible Backup Water

