



Alex Miliakidis
0842622452
alex@newpointproperty.co.za

Contact Commercial Division

010 0354431

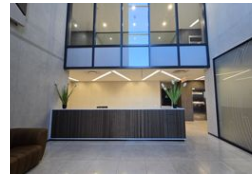
Office 40A
Eden Meadows Complex
1 Van Riebeeck Avenue
Greenstone
1609

5,108m² Office To Let in Bryanston

NEW



Web Ref CL13941



R817,280 pm

Gross Monthly Rental R817,280 Excl. VAT
Monthly Rates R1 Excl. VAT

Monthly Levy R1 Excl. VAT

220 22

Premium P-Grade Office Space on William Nicol – Fully Fitted & Ready for Business

Position your business in this high-visibility, fully equipped P-Grade office building located along bustling William Nicol Drive. Spanning three levels with private bathrooms on each floor, this modern workspace offers fibre connectivity, 24/7 security, full generator and water backup systems, and two elevators for convenience.

The space features a large boardroom, open-plan work areas, hot desk zones, private offices, call booths, kitchens, reception, and a full canteen—everything your team needs to thrive. Attractive tenant installation allowances are offered for long-term leases, and

Features

Zoning Commercial

Interior

Air Conditioning Yes
Power 3 Phase Yes

Exterior

Security Yes
Covered Parking Bays 38
Basement Parkings 182
Open Parking Bays 22

Sizes

Floor Size 5,108m²
Land Size 5,108m²
Building Height 10m

Extras

Office Security Estate Secure Parking Underground Parking Toilet Air Conditioner



<https://www.newpointproperty.co.za>