



Ethan Willett
0844752021
ethan.w@newpointproperty.co.za

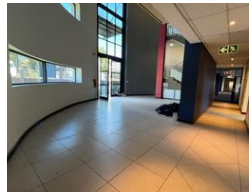
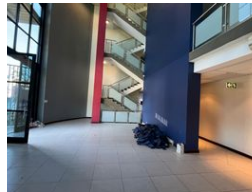
Contact Head Office

010 0354431

Office 40A
Eden Meadows Complex
1 Van Riebeeck Avenue
Greenstone
1609



Web Ref 1800EWLPTL



R162,000 pm

Gross Monthly Rental R162,000 Excl. VAT
Monthly Rates R1 Excl. VAT

Monthly Levy R1 Excl. VAT

0 30

Commercial property to Rent in Laserpark, Roodepoort

This spacious commercial office block, measuring 1800sqm, is now available to rent immediately at R162,000 per month (excluding VAT). Spread across four well-designed floors, the building offers flexibility to lease the entire space, half, or smaller sections to suit your business needs. The office features a neat and modern layout, including a welcoming reception area, elevator access, and ample office space on each level. Additional conveniences include 10 bathrooms, kitchenettes on multiple floors, and a rooftop area ideal for a smoking zone or social bar space.

Situated in a clean, professionally maintained business park in Laserpark, Roodepoort, the office is easily accessible from the main Beyers Naude Drive. The park provides 24-hour security, ensuring a safe and secure working environment for staff and visitors.

Features

Zoning Commercial

Interior

Floor Loading Cap. 1 Tn/m²
Air Conditioning Yes

Exterior

Security Yes
Open Parking Bays 30

Sizes

Floor Size 1,800m²

Extras

24 Hour Access 24 Hour Response Fibre Air Conditioning Unit

