



Ethan Willett
0844752021
ethan.w@newpointproperty.co.za

Contact Head Office

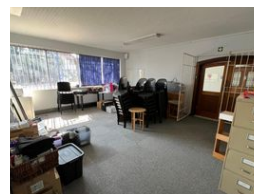
010 0354431

Office 40A
Eden Meadows Complex
1 Van Riebeeck Avenue
Greenstone
1609

240m² Office To Let in Strijdompark



Web Ref 240EWSPTL



R12,000 pm

Gross Monthly Rental R12,000 Excl. VAT
Monthly Rates R1 Excl. VAT

Monthly Levy R1 Excl. VAT

0 4

Commercial Property to Rent in Strijdompark, Randburg

This spacious 240sqm commercial office space is available to rent for R12 000 plus VAT and is ideally located in a neat and securely maintained business block just off the bustling Malibongwe Drive in Strijdompark, Randburg. Situated on the ground floor, the unit offers convenient access and a well-designed layout that includes four private offices, a boardroom area, a kitchenette, and two bathrooms. The clean, professional interior makes it perfect for a wide range of business operations.

The property features 24-hour access with on-site security, providing peace of mind for tenants and visitors alike. It is further equipped with back-up solar power, ensuring minimal disruption during load shedding or power outages. With its excellent

Features

Zoning Commercial

Interior

Floor Loading Cap. 1 Tn/m²
Air Conditioning Yes

Exterior

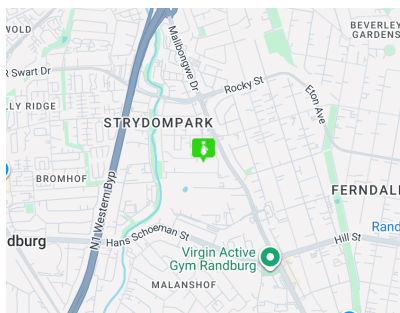
Security Yes
Open Parking Bays 4

Sizes

Floor Size 240m²

Extras

24 Hour Access 24 Hour Response Fibre



<https://www.newpointproperty.co.za>