



Ethan Willett
0844752021
ethan.w@newpointproperty.co.za

Contact Head Office

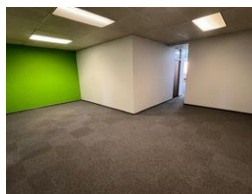
010 0354431

Office 40A
Eden Meadows Complex
1 Van Riebeeck Avenue
Greenstone
1609

175m² Office To Let in Strijdompark




Web Ref CL14016



R9,625 pm

Gross Monthly Rental R9,625 Excl. VAT

 3  0

175m² Strijdompark Office with Solar & Backup Power – Ready for Business

Secure a professional base for your business in this 175m² office unit, ideally located in the heart of Strijdompark, Randburg. Set within a gated and well-maintained office block, the space features five private offices, a welcoming reception area, two bathrooms, and a modern kitchenette—perfect for small to mid-sized teams seeking both functionality and comfort.

Standout features include built-in solar power and a backup generator, ensuring uninterrupted operations even during power outages. With quick access to major arterials and a business-friendly location, this office offers the perfect balance of practicality,

Features

Zoning Commercial

Interior

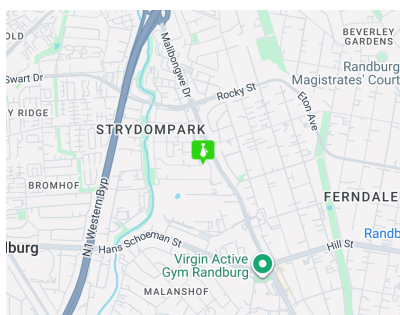
| | |
|------------------|-----|
| Air Conditioning | Yes |
| Power 3 Phase | Yes |
| Power Amps | 100 |

Exterior

| | |
|----------------------|-----|
| Security | Yes |
| Covered Parking Bays | 3 |

Sizes

| | |
|------------|-------|
| Floor Size | 175m² |
|------------|-------|



<https://www.newpointproperty.co.za>