



Ethan Willett
0844752021
ethan.w@newpointproperty.co.za

Contact Head Office

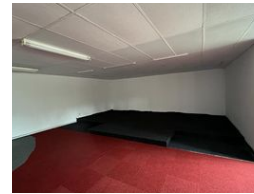
010 0354431

Office 40A
Eden Meadows Complex
1 Van Riebeeck Avenue
Greenstone
1609

422m² Office To Let in Strijdompark



Web Ref CL13125



R24,794 pm

Gross Monthly Rental R24,794 Excl. VAT

0 10

Versatile 422m² Commercial Space To Let in Prime Strijdompark Location

Position your business for success with this well-maintained 422m² office space in the heart of Strijdompark, Randburg. Located within a secure, dynamic business park, the property offers a professional environment ideal for growing teams. It features a functional layout with dedicated office areas and a boardroom—perfect for meetings, collaboration, and daily operations.

The unit includes two bathrooms and a kitchen for added day-to-day convenience, along with 45 amps of three-phase power to accommodate a variety of business functions. Whether you're in tech, admin, or light production, this versatile space combines

Features

Zoning Commercial

Interior

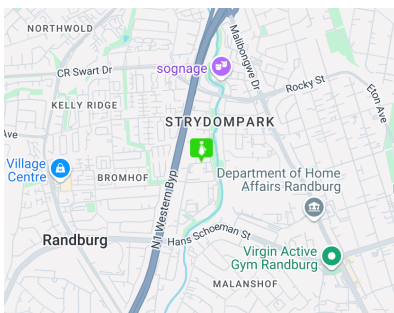
Floor Loading Cap.	5 Tn/m ²
Power 3 Phase	Yes
Power Amps	45

Exterior

Security	Yes
Open Parking Bays	10

Sizes

Floor Size	422m ²
Land Size	422m ²



<https://www.newpointproperty.co.za>