



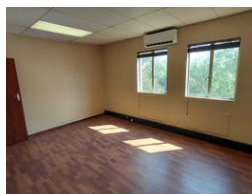
**Bongani Mtimkulu**  
0844542331  
bongani@newpointproperty.co.za

Contact Commercial Division

010 0354431

Office 40A  
Eden Meadows Complex  
1 Van Riebeeck Avenue  
Greenstone  
1609

261m<sup>2</sup> Office To Let in Randjespark



**R18,009 pm**

**Gross Monthly Rental** R18,009 Excl. VAT  
**Monthly Rates** R1 Excl. VAT

**Monthly Levy** R1 Excl. VAT



## Immaculate 261m2 office to let in Midrand

Presenting a pristine 261 m<sup>2</sup> first-floor office suite within the highly sought-after Corporate Park South in Randjespark, Midrand. This contemporary space is flawlessly maintained and offers abundant natural light with flexible layout options—perfect for open-plan teams or private workstations tailored to your business identity. Situated in a well-managed complex, it enjoys exceptional accessibility via Old Pretoria Road, New Road, Gautrain Station, and the Olifantsfontein off-ramp, with nearby amenities including restaurants, shopping centres, and fuel stations.

security and convenience are uncompromised: the building features 24-hour security and ample parking for staff and visitors,

## Features

**Building Name**  
**Zoning**

reedbuck crescent  
Commercial

**Interior**

Air Conditioning Yes

**Exterior**

Security Yes  
Covered Parking Bays 4  
Open Parking Bays 4

**Sizes**

Floor Size 261m<sup>2</sup>  
Land Size 261m<sup>2</sup>  
Building Height 7m

