



Robin Mulligan
Candidate Property
Practitioner
Registered with PPRA
(FFC 121 152 0)
0713556301

robin@newpointproperty.co.za

Contact Head Office

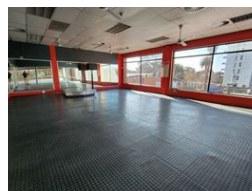
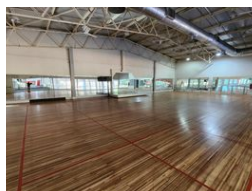
010 0354431

Office 40A
Eden Meadows Complex
1 Van Riebeeck Avenue
Greenstone
1609

3,162m² Business Centre To Let in Lambton



Web Ref CL13197



R140,000 pm

Gross Monthly Rental R140,000 Excl. VAT



0



250

Versatile 3,162m² Commercial Property with Olympic Pool & Endless Potential in Germiston

Unlock the potential of this expansive 3,162m² property, ideally positioned in Germiston's vibrant mixed-use zone. Previously a fully equipped gym, the 1,806m² ground floor includes open-plan space, private offices, male and female change rooms with showers and steam rooms, and an Olympic-sized indoor pool. A welcoming reception area and kids' activity zone make it perfect for wellness centres, training academies, or leisure facilities.

The 1,356m² upper-level features bright, high-ceilinged open areas ideal for fitness studios or conversion into warehouse, showroom, or light industrial use. With excellent natural light, flexible layout options, and generous on-site parking, this property offers a strategic location close to major roads and transport links. Don't miss this rare opportunity—contact us today to book a

Features

Zoning Commercial

Interior

Air Conditioning	Yes
Power 3 Phase	Yes
Power Amps	400

Exterior

Security	Yes
Open Parking Bays	250

Sizes

Floor Size	3,162m ²
Land Size	7,000m ²
Building Height	12m



<https://www.newpointproperty.co.za>