



Brandon Whitehead

Candidate Property Practitioner
Registered with PPRA
(FFC 121 151 9)

0817743977

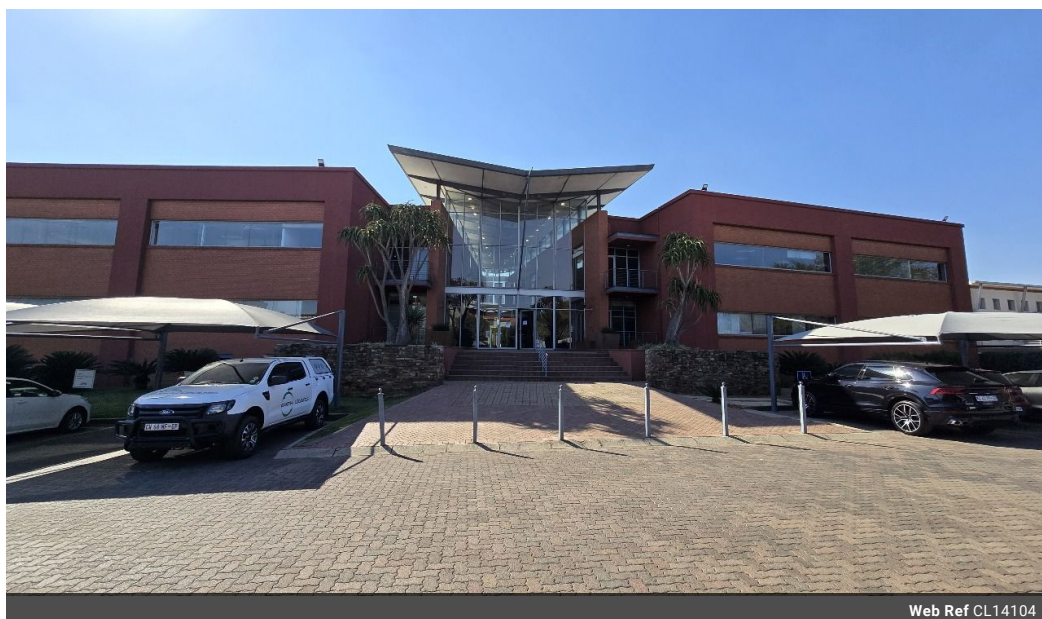
brandon@newpointproperty.co.za

Contact Head Office

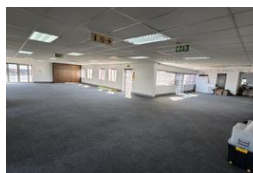
010 0354431

Office 40A
Eden Meadows Complex
1 Van Riebeeck Avenue
Greenstone
1609

422m² Office To Let in Bedfordview



Web Ref CL14104



R40,512 pm

Gross Monthly Rental R40,512 Excl. VAT
Monthly Rates R1 Excl. VAT

Monthly Levy R1 Excl. VAT



0



0

Prime 422m² First-Floor Office to Let in Riley Road Office Park

This 422m² first-floor office is available in the sought-after Riley Road Office Park, offering exceptional access to the N12, R24, and N3 highways, and just minutes from OR Tambo International Airport. Its prime location ensures seamless connectivity, making it ideal for businesses with regional or national operations.

The office is fully air-conditioned, fibre-ready, and supported by a backup generator and water supply for uninterrupted business operations. Set within a secure, access-controlled park with 24/7 security, electric fencing, and perimeter walls, the property also offers open, shaded, and basement parking options. With retail amenities like Meadowdale Mall and Eastgate nearby, this is a

Features

Building Name	CIB				
Zoning	Commercial				
Interior		Exterior		Sizes	
Air Conditioning	Yes	Security	Yes	Floor Size	422m²
Power 3 Phase	Yes			Land Size	422m²
Extras					
Office Secure Parking Air Conditioner Entrance Hall Shade Net Covered Visitors Parking 24 Hour Access Security Complex					

