

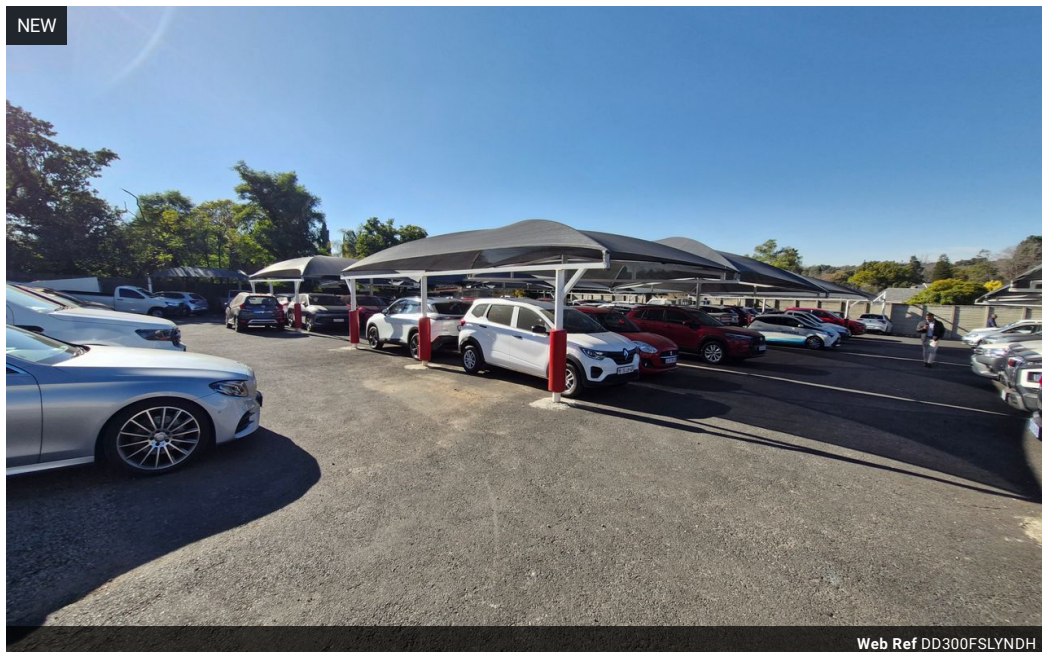


Dane Davids
0844782022
dane@newpointproperty.co.za

Contact Head Office

010 0354431

Office 40A
Eden Meadows Complex
1 Van Riebeeck Avenue
Greenstone
1609



Web Ref DD300FSLYNDH



R4,500,000

Monthly Levy R1 Excl. VAT

Monthly Rates R1 Excl. VAT



0



100

Open yard beautiful dealership , with lots of potential

This well-appointed vehicle dealership is for sale, featuring a generous 4,000m² fully tarred stand, offering excellent space for vehicle display, customer parking, and smooth movement throughout the premises. The property is designed for operational efficiency, making it ideal for motor dealers, fleet businesses, or related automotive services.

Included on-site is a functional workshop for repairs and maintenance, a dedicated wash bay for vehicle preparation, and well-maintained office space to support daily operations and client service. Conveniently located with good visibility and access, this

Features

Zoning Commercial

Interior

Floor Loading Cap.	10 Tn/m²
Air Conditioning	Yes
Power Amps	63

Exterior

Open Parking Bays	100
-------------------	-----

Sizes

Floor Size	300m²
Land Size	4,000m²