



Marcel Carneiro
Candidate Property
Practitioner
Registered with PPRA
(FFC 120 075 3)
0846932233

marcel@newpointproperty.co.za

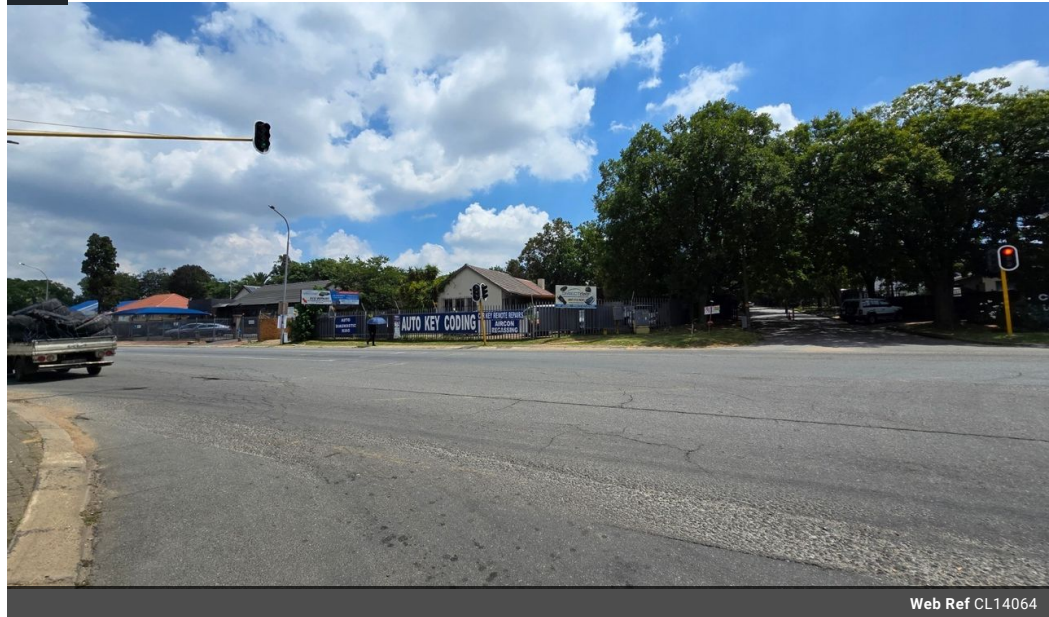
Contact Head Office

010 0354431

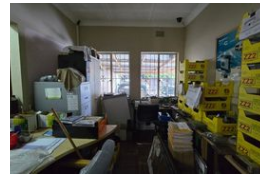
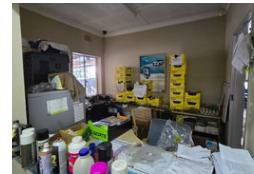
Office 40A
Eden Meadows Complex
1 Van Riebeeck Avenue
Greenstone
1609

250m² Office For Sale in Eastleigh

NEW



Web Ref CL14064



R2,995,000

Monthly Levy R1 Excl. VAT

Monthly Rates R1 Excl. VAT

2 6

Immaculate 250m² Corner Property in Eastleigh's Business Hub

Positioned on a prime corner stand in the bustling Eastleigh business district, this freestanding property is perfect for a professional, client-facing operation. It features a welcoming reception, sales counter, private offices, male and female restrooms, and a fully equipped kitchen—ready for immediate occupation.

A spacious garage area provides flexible workshop or storage space with its ablutions, while ample on-site parking ensures convenience for staff and visitors. With quick access to O.R. Tambo International Airport and major highways, including the N3,

Features

Zoning Commercial

Interior

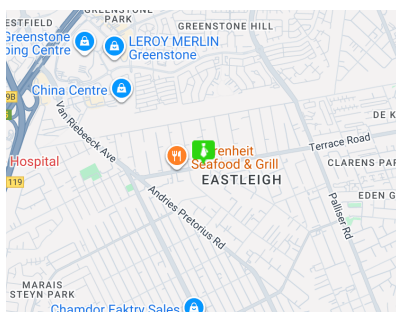
Power 3 Phase	Yes
Power Amps	60

Exterior

Covered Parking Bays	2
Open Parking Bays	6

Sizes

Floor Size	250m ²
Land Size	971m ²
Building Height	4m



<https://www.newpointproperty.co.za>