



Marcel Carneiro
Candidate Property Practitioner
Registered with PPRA
(FFC 120 075 3)
0846932233

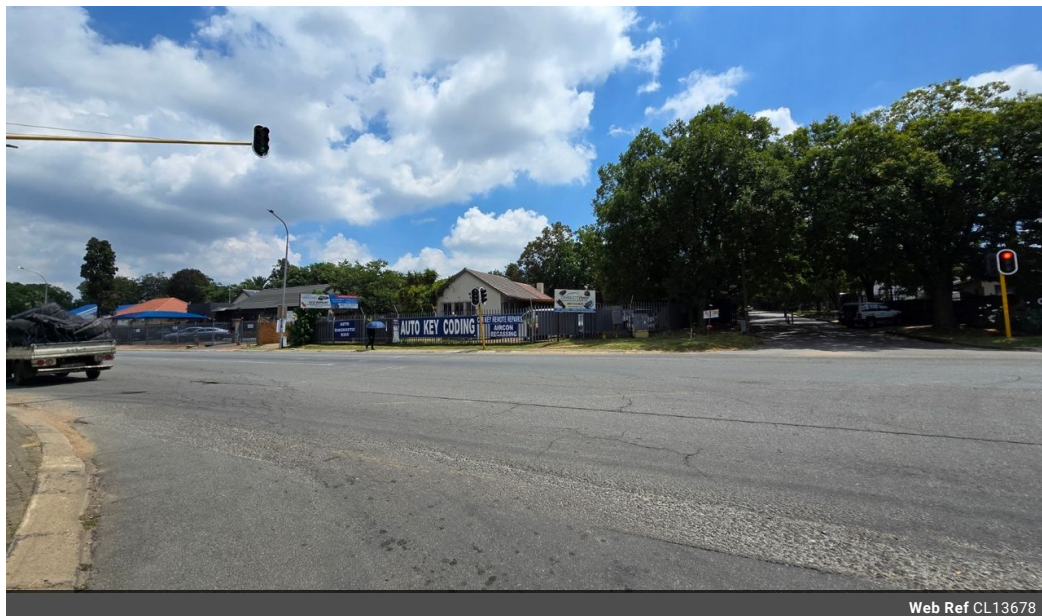
marcel@newpointproperty.co.za

Contact Head Office

010 0354431

Office 40A
Eden Meadows Complex
1 Van Riebeeck Avenue
Greenstone
1609

250m² Office For Sale in Eastleigh



Web Ref CL13678



R2,995,000

Monthly Levy R1 Excl. VAT

Monthly Rates R1 Excl. VAT

2 6

250m² Freestanding Business Premises in Eastleigh – High Exposure Corner Site

Unlock new opportunities with this immaculate 250m² freestanding property on a prime corner stand in Eastleigh's busy business district. The space includes a welcoming reception, sales counter, private offices, male and female restrooms, and a fully equipped kitchen, ready for immediate use in a professional, client-facing operation.

A versatile garage area offers workshop or storage options, complete with its ablutions. The property provides ample parking and excellent access to O.R. Tambo International Airport and major highways like the N3, R21, and R24. Contact us today to arrange

Features

Zoning Commercial

Interior

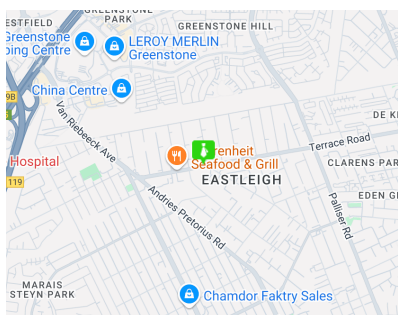
Power 3 Phase Yes
Power Amps 60

Exterior

Covered Parking Bays 2
Open Parking Bays 6

Sizes

Floor Size 250m²
Land Size 971m²
Building Height 4m



<https://www.newpointproperty.co.za>