



**Marcel Carneiro**  
Candidate Property  
Practitioner  
Registered with PPRA  
(FFC 120 075 3)  
**0846932233**

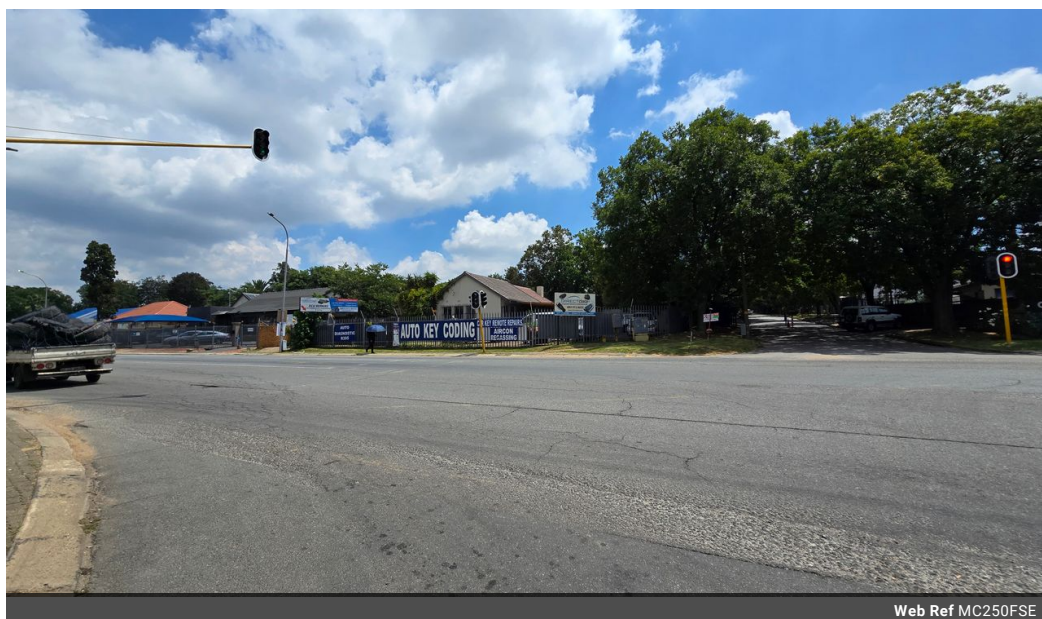
[marcel@newpointproperty.co.za](mailto:marcel@newpointproperty.co.za)

Contact Head Office

**010 0354431**

Office 40A  
Eden Meadows Complex  
1 Van Riebeeck Avenue  
Greenstone  
1609

250m² Office For Sale in Eastleigh



Web Ref MC250FSE



**R2,995,000**

Monthly Levy R1 Excl. VAT

Monthly Rates R1 Excl. VAT

2 6

250sqm Neat offices with main road exposure for sale in Eastleigh, Edenvale

Nestled in the highly desirable business hub of Eastleigh, this well maintained 250sqm freestanding property with main road exposure is now available for sale. The property sits on a spacious corner stand featuring a neat reception area with a sales counter, contains multiple offices, male and female ablution facilities, and a fully equipped kitchen, creating an ideal working environment.

There is a garage that can be used for additional storage or as a workshop area that also has ablutions. The premises offer ample parking for both staff and visitors. Its strategic location near O.R. Tambo International Airport and major transportation routes like the N3, R21, and R24 highways ensures excellent connectivity, making it a perfect choice for businesses seeking convenience and

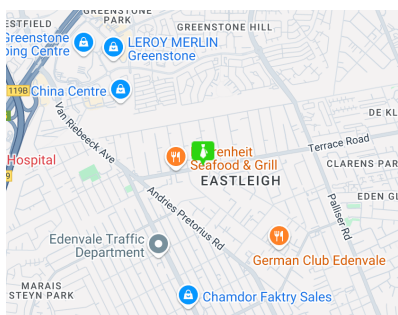
## Features

**Zoning** Commercial

**Interior**  
Power Amps 60

**Exterior**  
Covered Parking Bays 2  
Open Parking Bays 6

**Sizes**  
Floor Size 250m²  
Land Size 971m²  
Building Height 4m



<https://www.newpointproperty.co.za>